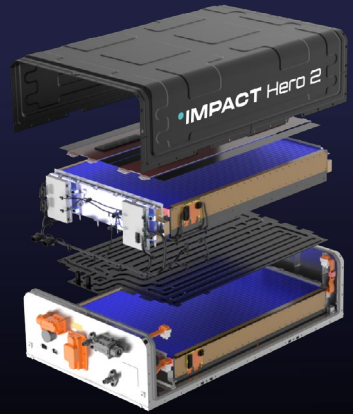


# Hero 2 LFP

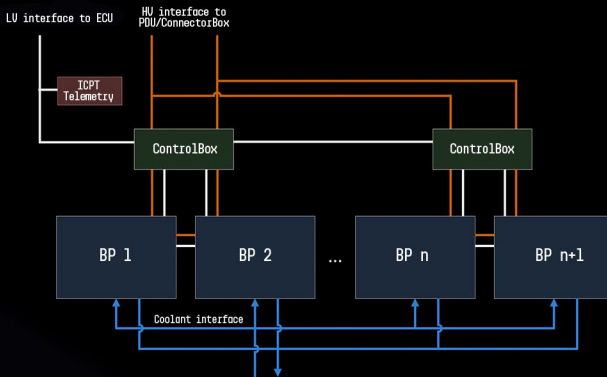
## Manufactured in Europe

### LFP short modular battery system

- Engineered & manufactured in Poland
- C-type compatibility
- Proprietary European BMS + GenAI intelligence
- Battery Passport-certified
- Advanced LFP blade technology



### LFP SHORT – SYSTEM ARCHITECTURE



\* The system can also be configured as a single battery string

### TARGET MARKET SEGMENTS



#### PUBLIC TRANSPORT

- E-bus
- Intercity
- Minibus



#### ON-HIGHWAY COMMERCIAL

- E-truck
- E-trailer
- Municipal road vehicles



#### OFF-HIGHWAY INDUSTRIAL

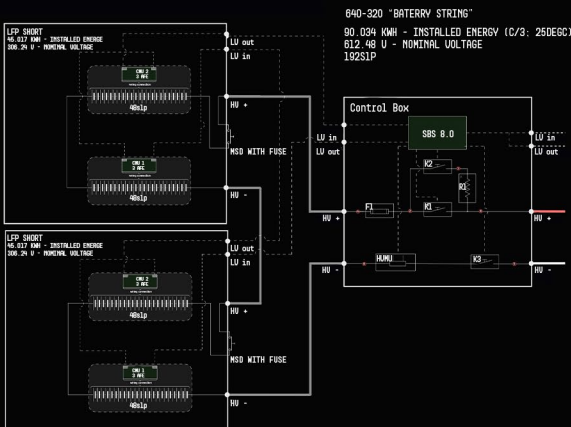
- Construction / Mining
- Port Logistics
- Airport GSE



#### MOBILE ROBOTICS

- Heavy Duty AGV

### LFP SHORT – STRING TOPOLOGY



• **IMPACT**

# LFP Short Modular Battery

## HERO 2 Technical Specification



Series Configuration	1S	2S
Nominal Voltage	306.24 VDC	612.48 VDC
Operating Voltage *	192 - 350.4 VDC	384 - 700.8 VDC
Installed Energy (C/3, 25°C)	45.017 kWh	90.034 kWh
Usable Energy (C/3, 25°C)	Up to 42.765 kWh	Up to 85.53 kWh
Chemistry	LFP / Graphite	
BP configuration	96s1p	
Dimensions (L x W x H)	1039.6±5 x 650±5 x 275±5 mm	
Dimensions including connectors (L x W x H)	1091.3±5 x 650±5 x 275±5 mm	
Ingress Protection	IP 6K7 acc. ISO 20653:2023	
Weight	306.8 kg	
Operating temperature	-20°C to 55°C	
LV range	18-32 VDC	
Charge/Discharge current cont. *	Up to 147 A	
Charge/Recuperation current peak (@10s) *	Up to 270 A	
Discharge current peak (@10s) *	Up to 350 A	
Warranty **	Up to 15 years	
Standards compliance	<ul style="list-style-type: none"> <li>• UN ECE R100.03</li> <li>• UN ECE R10.07</li> <li>• UN 38.3</li> <li>• ISO 26262 as SEooC (BMS)</li> <li>• ISO 21434 as CEooC (BMS)</li> <li>• EMC Directive 2014/30/EU</li> <li>• LVD 2014/35/EU</li> <li>• Regulation (EU) 2023/1542 (Battery Passport)</li> </ul>	

\* Configurable cut-off voltage range – e.g. a 520-700 VDC range can be supported. Depending on SoC and temperature

\*\* Depending on duty cycles and operation conditions

• **IMPACT Hero 2 LFP** - ENGINEERED & MANUFACTURED IN POLAND